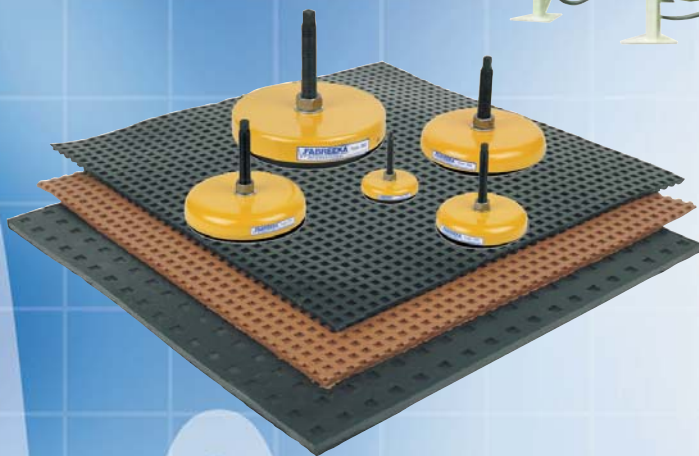


Pads, Levelers & Machine Mounts



Pads, Levelers
& Machine Mounts

F A B C E L®

Fabcel® Pads

High Quality Molded Elastomer

Fabcel Pads

Fabcel is a high quality elastomer molded into scientifically designed vibration and shock isolation pads. The pad surfaces have patented, recessed, offset cells to allow flow of the elastomer when under load while maintaining lateral stability. This design eliminates the shape factor usually associated with elastomeric materials and provides positive grip to machine foot and floor when under load.

Fabcel Features

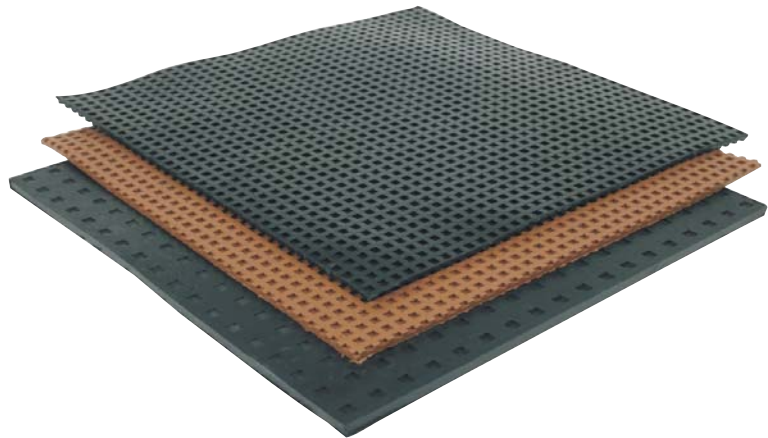
- Square cells on each side of Fabcel Pads provide positive grip between machine foot and the floor.
- Uniform arrangement of square cells facilitate deflection of the Fabcel Pad under load.
- Fabcel Pads resist permanent set, oil, cleaning compounds, effects of sunlight or air. They will not absorb oil or water.
- Cell pattern prevents the intrusion of foreign materials beneath the load bearing area of the pad.
- Offset cell construction of Fabcel 25, 50 and 100 Pads (cells on opposite sides of pad offset from each other) provide positive grip under lighter loads.
- Specially-designed cell patterns for Fabcel 200 and 300 Pads provide optimum stability and vibration isolation for heavier loads.

Applications

Typical Applications	Fabcel Pads Recommended*
Blowers	25 to 300
Cold Headers	300
Compressors**	25 to 300
Coordinate Measuring Machines**	25 to 300
Dynamometers	50 to 300
Fans**	25 to 300
Generators	25 to 300
HVAC Equipment	25 to 300
Microscopes	25
Printing Presses**	50 to 300
Punching and Notching**	100 to 300
Punch Presses**	50 to 300
Riveting Machines	50 to 300
Stereos	25
Vacuum Pumps	25
Vibratory Feeders	50 to 300
Word Processing Equipment	25
X-Ray Equipment	25

*See "How to Select Example" section.

**May require isolated inertia block and anchoring. Consult Fabreeka's Engineering Department.



Fabcel Benefits

- Permits low cost machinery mounting by eliminating the need for drilling, bolts, lag screws or adhesives.
- Greater lateral stability is achieved through the square cell design which provides continuous bearing areas on both sides of the pad and in all directions.
- Reduces vibration, absorbs shock and controls noise.
- Prevents machinery from walking or creeping.
- Increases productivity and reduces machine maintenance time.
- Meets OSHA requirements for anchoring machines.
- Easily cut with scissors or sharp knife.

How to Select Example

$$1 \quad \frac{3,600 \text{ lbs. (1636 kg) machine weight}}{4 \text{ mounting points}} = 900 \text{ lbs. (409 kg) per mounting point}$$

$$2 \quad \frac{900 \text{ lbs. (409 kg)}}{20 \text{ sq. in. (129cm}^2\text{) (area of each mounting pad)}} = 45 \text{ psi (3.16 kg/cm}^2\text{)}$$

3 Using the capacity section of the specification chart, the correct Fabcel pad is Fabcel 50.

Fabcel Pads Specifications

Type Pad	Capacity	Pad Size "A"	Pad Size "B"	Material
Fabcel 25	1 - 25 psi (0.07 - 1.76kg/cm ²)	18" x 18" x 5/16" (457 x 457 x 8mm)	6" x 6" x 5/16" (152 x 152 x 8mm)	Buna "N"
Fabcel 50	26 - 50 psi (1.83-3 - 3.52kg/cm ²)	18" x 18" x 5/16" (457 x 457 x 8mm)	6" x 6" x 5/16" (152 x 152 x 8mm)	Neoprene
Fabcel 100	51 - 100 psi (3.59 - 7.03kg/cm ²)	18" x 18" x 5/16" (457 x 457 x 8mm)	6" x 6" x 5/16" (152 x 152 x 8mm)	Neoprene
Fabcel 200	101 - 200 psi (7.10 - 14.06kg/cm ²)	18" x 18" x 1/2" (457 x 457 x 13mm)	6" x 6" x 1/2" (152 x 152 x 13mm)	Neoprene
Fabcel 300	201 - 300 psi (14.13 - 21.09kg/cm ²)	18" x 18" x 1/2" (457 x 457 x 13mm)	6" x 6" x 1/2" (152 x 152 x 13mm)	Neoprene

*N/mm² = 0.10 kg/cm². Under impact machinery such as punch presses, the Fabcel Pads selected should be rated at 50% of capacity.

Fabcel® Levelers

Adjustable Machine Feet

Levelers

- Self-aligning, without sacrificing stability
- Control noise, shock and vibration with patented Fabcel Pad
- Can be made to customer's material and dimensional requirements

Benefits

- Permit fast, simplified, precise leveling of all types of machines and equipment
- Compensate for uneven surface conditions
- Low initial cost



Model Number	Q35	Q75	Q150	T35	T75	T150	TE75	TE150	TE300	LD75	LD150	HD300	HD450
Bolt Diameter - in. (mm)	1/4 - 20 (M6)	1/4 - 20 (M6)	1/4 - 20 (M6)	3/8 - 16 (M10)	3/8 - 16 (M10)	3/8 - 16 (M10)	3/8 - 16 (M10)	3/8 - 16 (M10)	3/8 - 16 (M10)	1/2 - 13 (M12)	1/2 - 13 (M12)	1/2 - 13 (M12)	1/2 - 13 (M12)
Thread Length - in. (mm)	1 5/16 (33)	1 5/16 (33)	1 5/16 (33)	1 1/2 (38)	1 1/2 (38)	1 1/2 (38)	1 5/8 (42)	1 5/8 (42)	1 5/8 (42)	1 11/16 (43)	1 11/16 (43)	1 11/16 (43)	1 11/16 (43)
Base Diameter - in. (mm)	1 1/2 (38)	1 1/2 (38)	1 1/2 (38)	1 1/2 (38)	1 1/2 (38)	1 1/2 (38)	2 1/8 (54)	2 1/8 (54)	2 1/8 (54)	2 1/8 (54)	2 1/8 (54)	2 1/8 (54)	2 1/8 (54)
Pad Diameter - in. (mm)	1 3/8 (35)	1 3/8 (35)	1 3/8 (35)	1 3/8 (35)	1 3/8 (35)	1 3/8 (35)	2 (51)	2 (51)	2 (51)	2 (51)	2 (51)	2 (51)	2 (51)
Overall Height - in.	2 1/16	2 1/16	2 1/16	2 3/8	2 3/8	2 3/8	2 9/16	2 9/16	2 9/16	2 11/16	2 11/16	2 11/16	2 7/8
Max Load Mount - lbs. (kg)	35 (16)	75 (34)	150 (68)	35 (16)	75 (34)	150 (68)	75 (34)	150 (68)	300 (136)	75 (34)	150 (68)	300 (136)	450 (205)

Typical Applications

- Computer Frames • Conveyors • Copying Machines
- Electronic Equipment • Food Processing Equipment
- Gym Equipment • Laboratory Equipment • Lasers
- Medical Equipment • Office Partitions • Offset Presses
- Ovens • Packaging Machinery • Pill Making Machinery
- Robots • Scales • Teletype Machines • Vending Machines
- Vibratory Feeders

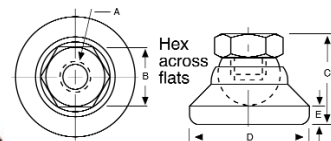
How to Select Example

$$\frac{2,000 \text{ lbs. (909 kg) computer frame weight}}{8 \text{ leveling points w } 3/8" \text{ dia. (M10) threaded hole}} = 250 \text{ lbs. (114kg) per leveling point}$$

2 Using the maximum load section of the specifications chart, the correct Fabcel Leveler to use is TE-300.

Swivel Type Levelers

Model SW and SWB Swivel Type Levelers compensate up to 10° each side of the centerline in order to adjust to uneven surfaces. Base area designed to assure solid support. Zinc plated and gold iridited to resist rust. Model SWB is furnished with 2" long adjusting bolt.



Model	A	B	C	D	E	Max. Load Mount
SW - I & SWB - I	3/8 - 16" M10	5/8" 16 mm	7/8" 22 mm	1 1/4" 32 mm	3/16" 5 mm	6,400 lbs. 2,909 kg
SW-II & SWB-II	1/2 - 13" M12	3/4" 19 mm	1 1/8" 29 mm	1 7/8" 48 mm	1/4" 6 mm	7,000 lbs. 3,182 kg
SW-III & SWB-III	5/8 - 11 M16	7/8" 22 mm	1 1/4" 32 mm	2 1/2" 64 mm	5/16" 8 mm	10,000 lbs. 4,546 kg
SW-IV & SWB-IV	3/4 - 10 M20	1 1/16" 27 mm	1 1/2" 38 mm	3" 76 mm	1/2" 13 mm	13,500 lbs. 5,136 kg

Note: All Fabcel Levelers are plated to provide corrosion resistance; Swivel Levelers swivel 10° each side of centerline. All others approximately 5°. Swivel Levelers can be furnished with patented Fabcel Pads and readily manufactured to customer specifications; also available in stainless steel. For engineering assistance, consult Fabreka's Engineering Department.

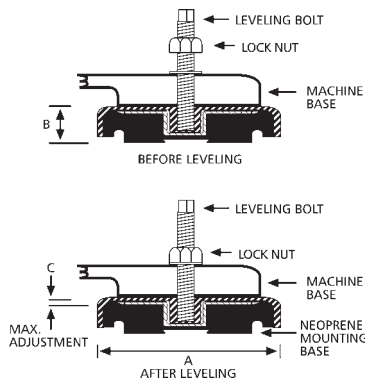


Lev-L® Mounts

200 Series with Integral Bolts

Lev-L Mount Benefits

- Designed for a full range of loads up to 25,000 lbs
- Isolates both vertically and horizontally
- Controls noise, shock and vibration
- Internal leveling feature allows fast, simplified precise leveling up to 1/2"
- Neoprene mounting base resists oil, grease, caustics and ozone
- No cementing or bolting to floor
- Meets OSHA requirements for anchoring machinery
- Low initial cost



How to Select Example

- 1 $\frac{64,000 \text{ lbs. (29,100 kg) machine weight}}{4 \text{ mounting points}} = 16,000 \text{ lbs. (7,300 kg) per mounting pt.}$
- 2 Using the maximum load range section of the specifications chart, the correct series 200 Fabcel Lev-L Mount for 16,000 lbs. (7,300 kg) is the type 260.
- 3 For impact machinery, use next larger size.

Applications

Typical Applications	Mount Type Recommended*
Air Conditioning	210 to 270
Bindery Equipment	210 to 230
Compressors / Pumps	210 to 240
Coordinate Measuring Machines**	220 to 240
Drill Pressing	210 to 240
Injection Molding Machines	230 to 260
Lathes	210 to 270
Milling Machines	220 to 270
Mixing Mills	230 to 250
Hibaling Machines	220 to 270
Optical Instruments	210 to 230
Shears	220 to 250
Planers / Shapers	220 to 270
Presses	220 to 270
Screw Machines	220 to 260
Washing / Cleaning Machines	220 to 250

*See "How to Select Example" section.

**May require isolated inertia block and anchoring. Consult Fabreka's Engineering Department.

Specifications Lev-L Mounts

Type Mount	Base Diam. A	Max. Load	Bolt Size (Diam. x Lg)	Base Height B	Max. Adj. C
210	1 - 5/8" (40 mm)	300 lb (125 kg)	M5 x 30	5/8" (15 mm)	3/16" (5 mm)
220	3 - 1/8" (80 mm)	1,000 lb (450 kg)	M10 x 80	1" (25 mm)	5/16" (8 mm)
230	4 - 3/4" (120 mm)	2,500 lb (1,150 kg)	M12 x 100	1 - 1/4" (32 mm)	1/2" (12 mm)
240	6 - 1/4" (160 mm)	4,500 lb (2,000 kg)	M16 x 120	1 - 3/8" (35 mm)	1/2" (12 mm)
250	7 - 1/4" (185 mm)	10,000 lb (4,500 kg)	M20 x 160	1 - 1/2" (39 mm)	1/2" (12 mm)
260	9" (229 mm)	16,000 lb (7,500 kg)	M24 x 180	2 - 1/8" (54 mm)	1/2" (12 mm)
270	12 - 3/8" (315 mm)	25,000 lb (11,500 kg)	M30 x 200	2 - 3/4" (70 mm)	1/2" (12 mm)

Mount using a thru hole on machine foot allowing adequate clearance and fit. Special length bolts available on request. Consult the factory for details. Custom designs available from the factory.

Precision-Aire™ PLM Mounts

Pneumatic Leveling Mounts

Precision-Aire™ pneumatic leveling mounts provide low frequency vibration and shock control for surface plates, coordinate measuring machines, fans, air compressors, motor / generator sets, high speed punch presses and more.



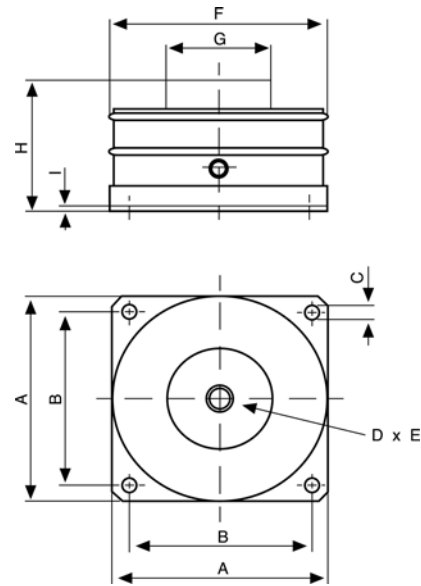
The Fabreeka PLM series pneumatic isolation mounts are low frequency vibration and shock isolators which provide both attenuation of disturbing vibration and equipment leveling.

For vibration control applications, the pneumatic portion of these mounts provide significant reduction of vibration occurring at frequencies above 5.0 Hz.

PLM isolation mounts will continue to isolate with no pressure having a vertical natural frequency of approximately 10.0 Hz.

The vertical to horizontal natural frequency ratio is approximately 1:1 with a degree of horizontal stability.

For shock or impact applications, the outer elastomeric wall construction provides a high deflection shock mount. A low natural frequency (3.0 Hz) can be maintained by utilizing an external spacer to prevent a "bottom out" condition.



PLM Mount Specifications

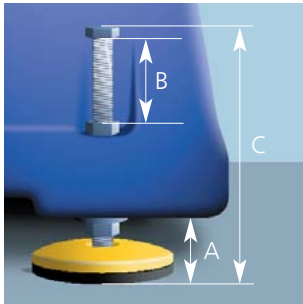
Model	A	B	C	D	E	F	G	H	I	Max Load lbs. (kg)
PLM 1	3.00 [76.2]	2.38 [60.4]	0.28 [6.9]	0.375-16 UNC-2B	0.47 [11.9]	2.88 [73.2]	1.00 [25.4]	2.50 [63.5]	0.125 [3.2]	100 [45]
PLM 3	4.19 [106.4]	3.50 [88.9]	0.28 [6.9]	0.500-13 UNC-2B	0.53 [13.5]	4.14 [105.2]	1.75 [44.4]	2.45 [62.2]	0.125 [3.2]	300 [136]
PLM 6	5.12 [130.0]	4.25 [108.0]	0.29 [7.4]	0.500-13 UNC-2B	0.53 [13.5]	4.99 [126.7]	2.13 [54.1]	3.50 [88.9]	0.125 [3.2]	600 [272]
PLM 12	6.88 [174.8]	6.00 [152.4]	0.29 [7.4]	0.500-13 UNC-2B	0.53 [13.5]	6.74 [171.2]	3.00 [76.2]	3.50 [88.9]	0.125 [3.2]	1200 [544.3]
PLM 24	10.0 [254.0]	8.50 [215.9]	0.56 [14.2]	0.625-11 UNC-2B	0.75 [19.0]	9.66 [245.4]	4.75 [138.2]	3.50 [88.9]	0.188 [4.8]	2400 [1089]
PLM 48	13.50 [342.9]	12.00 [304.8]	0.56 [14.2]	0.625-11 UNC-2B	0.75 [19.0]	13.31 [338.1]	7.50 [190.5]	3.50 [88.9]	0.188 [4.8]	4800 [2177]
PLM 96	18.50 [469.9]	16.00 [406.4]	0.81 [20.6]	1.000-14 UNS-2B	0.88 [22.4]	18.44 [468.4]	10.50 [266.7]	3.50 [88.9]	0.250 [6.4]	9600 [4354]
PLM 192	24.00 [609.6]	20.00 [508.0]	0.81 [20.6]	1.000-14 UNS-2B	0.88 [22.4]	24.00 [609.6]	15.75 [400.1]	3.50 [88.9]	0.250 [6.4]	19200 [8709]

Fabcel[®] Lev-L[®] Mounts

With Separate Bolt Standard Series

Lev-L Mount Benefits

- Scientifically designed square foot suction cells firmly anchor machine to floor
- Controls noise, shock and vibration
- Meets OSHA requirements for anchoring machinery
- Permits fast, simplified, precise leveling of all types of machines and equipment
- Self-aligning without sacrificing stability
- Compensates for uneven floors
- Eliminates danger of creeping or walking
- Needs no cementing or bolting to floor
- Saves on new machine installation or relocation of existing equipment
- Can be used over again when relocating machinery
- Low initial cost
- Can be unitized on special order



How to Select Example

- 1 $\frac{4,000 \text{ lbs. (1818 kg) machine weight}}{4 \text{ mounting points}} = 1000 \text{ lbs. (455 kg) per mounting point}$
- 2 Using the maximum load range section of the specifications chart, the correct Fabcel Lev-L Mount for 1,000 lbs. (455 kg) is the type 10.
- 3 For impact machinery, use next larger size.

Applications

Typical Applications	Mount Type Recommended*
Bindery Equipment	10 to 40
Clickers	10 to 80
Collators	5 to 20
Conveyors	2.5 to 120
Coordinate Measuring Machines**	5 to 40
EDM	5 to 40
Lathes	2.5 to 120
Milling Machines	10 to 120
Optical Comparators	2.5 to 40
Printing Presses**	10 to 120
Process Cameras	2.5 to 20
Punching & Notching	20 to 120
Robots	5 to 120
Saws**	5 to 120
Screw Machines	5 to 80
Woodworking Machinery	2.5 to 120

*See "How to Select Example" section.

**May require isolated inertia block and anchoring. Consult Fabreeka's Engineering Department.

Specifications Lev-L Mounts

Type Mount	Base Diam.	Load Range		Bolt Diam. Inches	Minimum Height A	Max. Adjustment B	Overall Height C
		Min/Max lbs	kg				
2 1/2	2 1/2" (57 mm)	125 250	57 114	M8 or 5/16 - 24	1" (25 mm)	2 5/8" (67 mm)	4 1/4" (108 mm)
5	3 1/2" (89 mm)	251 500	114 227	M12 or 1/2 - 20	1 3/8" (35 mm)	4 1/4" (108 mm)	6 5/8" (168 mm)
10	3 1/2" (89 mm)	501 1,000	227 455	M12 or 1/2 - 20	1 3/8" (35 mm)	4 1/4" (108 mm)	6 5/8" (168 mm)
20	7" (178 mm)	1,001 2,000	455 908	M20 or 3/4 - 16	1 7/8" (48 mm)	3 5/8" (92 mm)	6 7/8" (175 mm)
40	7" (178 mm)	2,001 4,000	909 1,818	M20 or 3/4 - 16	1 7/8" (48 mm)	3 5/8" (92 mm)	6 7/8" (175 mm)
80	7" (178 mm)	4,001 8,000	1,818 3,636	M20 or 3/4 - 16	2 1/8" (54 mm)	3 7/8" (98 mm)	7" (178 mm)
120	7" (178 mm)	8,001 12,000	2,727 5,455	M20 or 3/4 - 16	2 1/8" (54 mm)	3 7/8" (98 mm)	7" (178 mm)

Maximum adjustment is reduced by machine foot thickness.

World Headquarters
Fabreeka International, Inc.
PO Box 210
1023 Turnpike Street
Stoughton, MA 02072
Tel: 1 (800) 322-7352
Tel: 1 (781) 341-3655
Fax: 1 (781) 341-3983
E-mail: info@fabreeka.com
www.fabreeka.com

Canada
Fabreeka Canada Ltd
Tel: 1 (800) 322-7352
Tel: 1 (781) 341-3655
Fax: 1 (781) 341-3983
E-mail: info@fabreeka.com

Holland
Fabreeka b.v. Holland
Molenwerf 12
Postbus 133
1910 AC Uitgeest
Tel: 31 - (0)2513 20305
Fax: 31 - (0)2513 12830
E-mail: info@fabreeka.nl

Germany
Fabreeka GmbH Deutschland
Hessenring 13
Postfach 103 (D-64570)
D-64572 Büttelborn
Tel: 49 - (0)6152-9597-0
Fax: 49 - (0)6152-9597-40
E-mail: info@fabreeka.de

England
Fabreeka International, Inc.
8 - 12 Jubilee Way
Thackley, Old Road, Shipley
West Yorkshire BD18 1QG
Tel: 44 - (0)1274 531333
Fax: 44 - (0)1274 531717
E-mail: info@fabreeka-uk.com